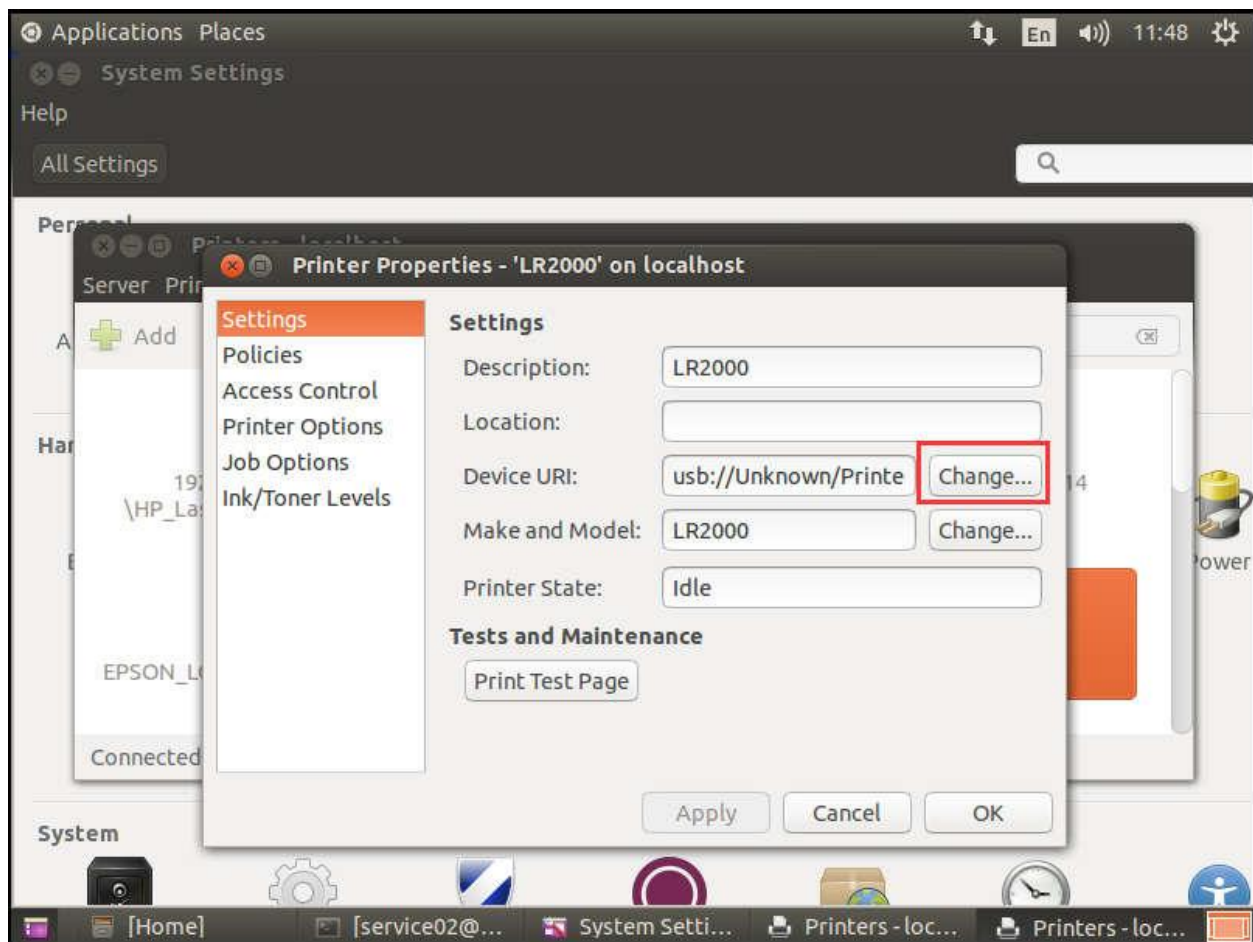


Part A. Driver installation

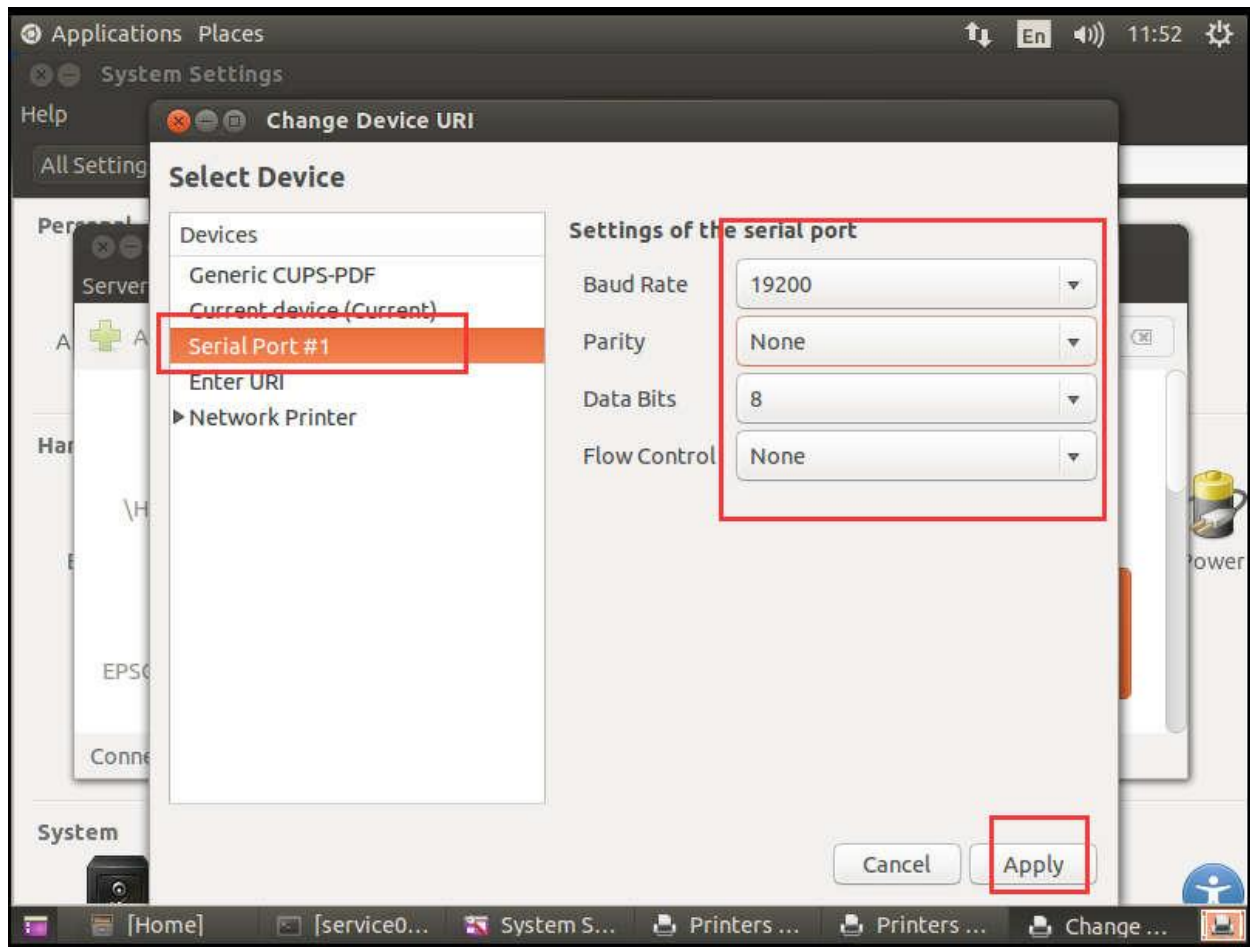
1. Copy driver folder to your system according your system;
2. Go into the driver folder: `cd linux32` or `cd linux64`;
3. Run driver installation by: `sudo sh ./install.sh`;

Part B. Printer configuration

1. The printer will installed as USB interface by default; to change setting or interface port, go to printer setting at System setting - Printers;
2. Right click printer "LR2000" and select Properties;
3. Click "Change" for Device URI:



- 3a. For serial port, choose Serial port # and fill it the serial settings:



3b: For Ethernet, choose Network printer - Find Network Printer - Find, Enter Printer IP address and 9100 for port number;

